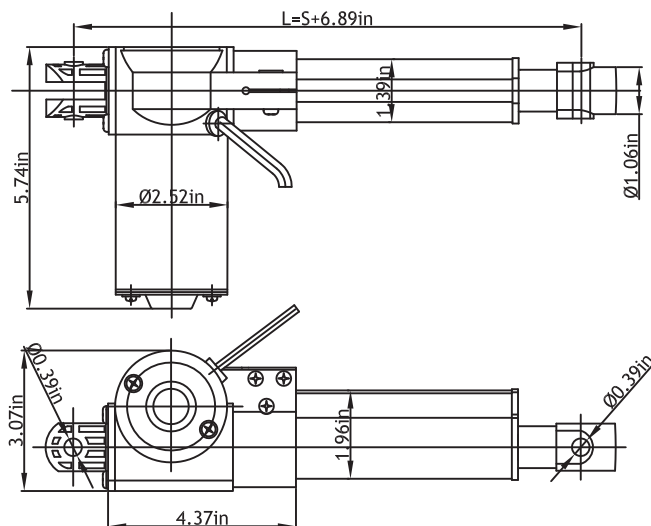


Specification

- Input Voltage: 12VDC
- Max Capacity: 1320lbs (6000N)
- Cycle: 10%
- Operation Temperature: -20 °C to 65 °C
- Noise Level: < 50 dB
- Speed: 5mm/second
- Color: Black
- Waterproof Rating: IP54
- Standard Stroke: 6/8/10/12/14/18/20/24/28/32/36/40 (inch)



Switch Specification

- Type: DPDT Momentary
- Spec: DC 12V / 25A
- Wire Length: 20 inches
- Mounting Accessory: Vevro
- Dimension: 4.29" x 1.37"



Switch Wiring

- Simply connect red/black wire with your DC power supply, and plug connector with linear actuator.

