

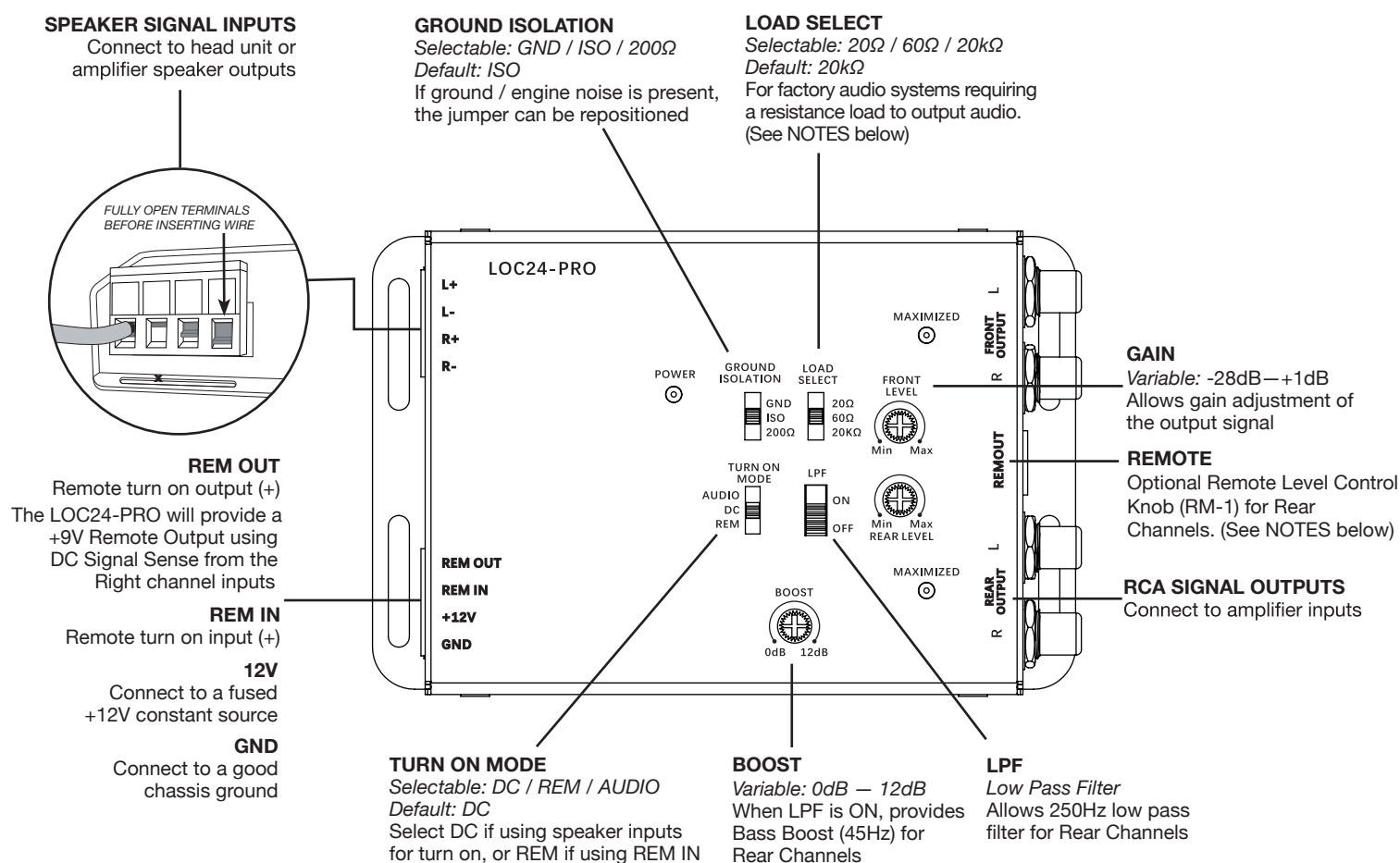
# ADVANCED LINE OUTPUT CONVERTER

## Quick Start Guide

The LOC22-PRO & LOC24-PRO can be used to add amplifiers to an audio system that does not have RCA outputs or when replacing an OEM radio and retaining the factory amplified system. Variable Gain Controls with Clipping Indicators, Selectable Ground Isolation and Load Select features ensure a pure, noise-free signal for any type of audio system.

This Quick Start Guide will get you going, but if you need additional help or information, please visit our website or contact Technical Support.

## LOC24-PRO 4 Channel Line Output Converter



**REMOTE-** It is always optimal to adjust the gain at the output side of the amplifier, thus it's recommended to use the Amplifier's Remote Knob when available.



7TH BUILDING, NO.59 CHUANG FU ROAD, XIAO GANG  
INDUSTRIAL ZONE, NINGBO 315800, CHINA

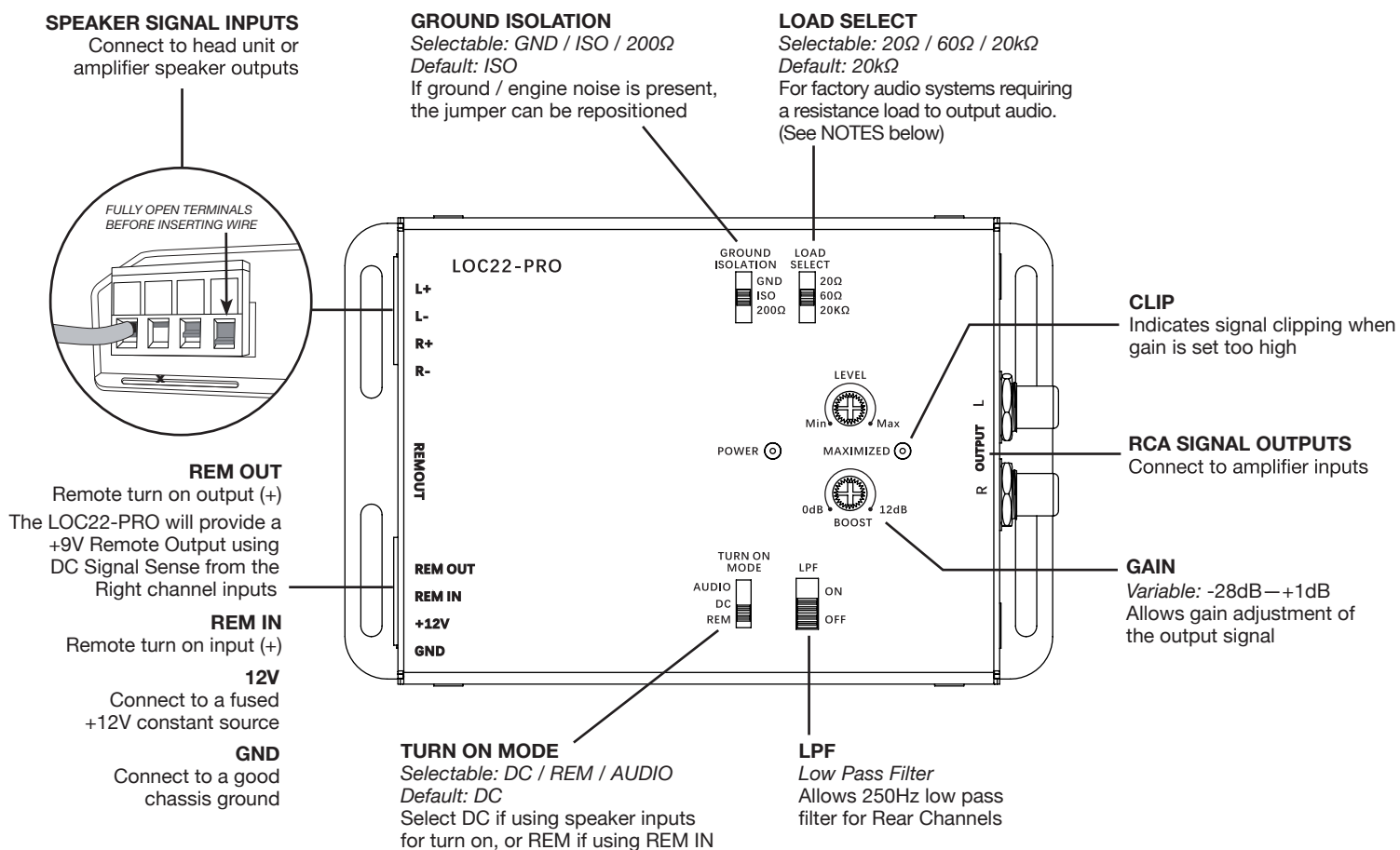
Tel +86.574.873.88888

Fax +86.574.876.77777

www.edgeholdings.com

# ADVANCED LINE OUTPUT CONVERTER

## LOC22-PRO 2 Channel Line Output Converter



## Example Installation

Speaker level input from a radio to RCA level output for an aftermarket amplifier is the most commonly used configuration for the LOC22-PRO & LOC24-PRO. This will create RCA level outputs from a radio that only has speaker level outputs.

In the example below, the Positive(+) and Negative(-) wires of two speakers are tapped and connected to the SPEAKER SIGNAL INPUTS of the LOC22-PRO & LOC24-PRO. The speakers will continue to play as normal. The REM OUT is connected to the amplifiers turn-on. When the radio is turned on the LOC22-PRO & LOC24-PRO will automatically turn on the amplifier. Lastly, the RCA SIGNAL OUTPUTS from the LOC22-PRO & LOC24-PRO are connected to the aftermarket amplifiers inputs.



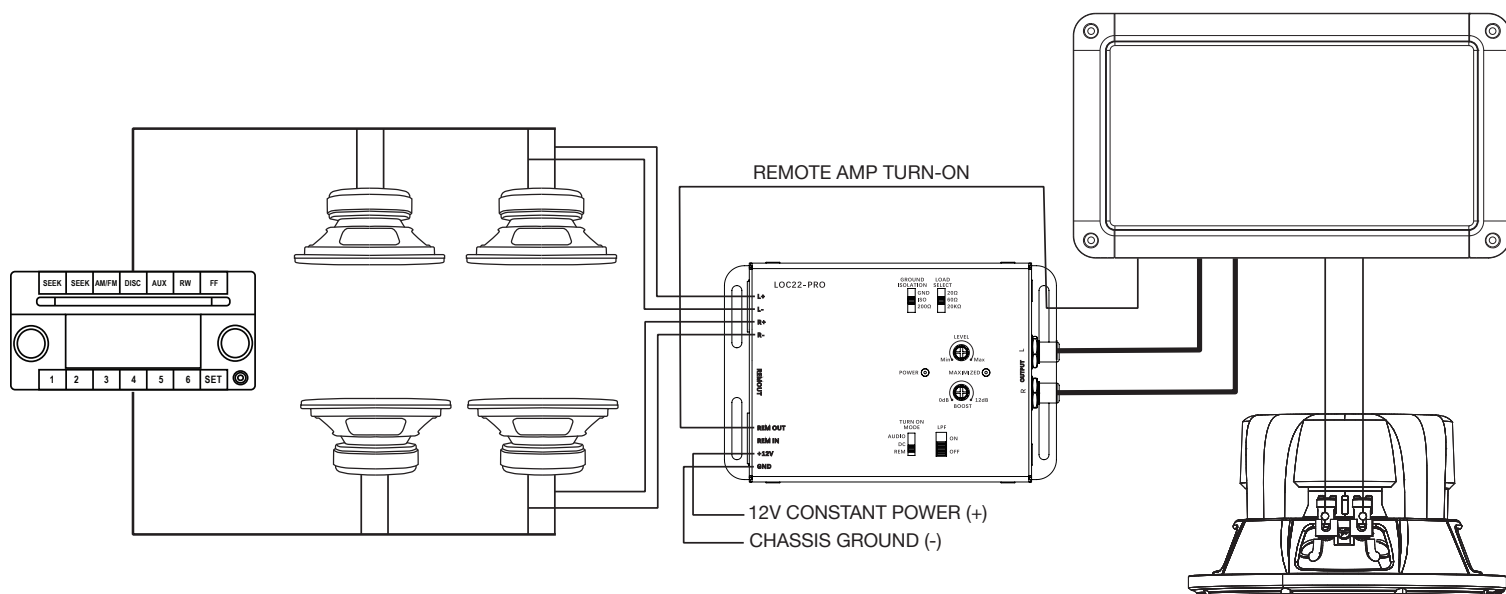
7TH BUILDING, NO.59 CHUANG FU ROAD, XIAO GANG  
INDUSTRIAL ZONE, NINGBO 315800, CHINA

Tel +86.574.873.88888

Fax +86.574.876.77777

www.edgeholdings.com

# ADVANCED LINE OUTPUT CONVERTER



## DC Signal Sense

DC offset is a high falutin technical term that means the LOC22-PRO & LOC24-PRO can sense when the head unit is on, not necessarily when audio is being sent to the LOC22-PRO & LOC24-PRO. Use DC Signal Sense mode when your factory sound system Outputs a DC offset when it is on.

## Audio Sense

When this mode is selected, the LOC22-PRO & LOC24-PRO will ONLY turn on when you start playing a source from the head unit. Whether it be the radio, CD player or streaming via Bluetooth from a mobile device. If you turn the head unit on, but DON'T play audio, the LOC22-PRO & LOC24-PRO will not turn on.

## Remote Input

This is the traditional way to turn on the LOC22-PRO & LOC24-PRO and gives you more control of exactly when the unit will turn on. Most common places to connect the remote input are from the ignition of the vehicle, fuse box, or some other 12V source (such as a cigarette lighter).

### Trigger Mode

REM In  
DC  
Audio

### Trigger Mode

REM In  
DC  
Audio

### Trigger Mode

REM In  
DC  
Audio

# ADVANCED LINE OUTPUT CONVERTER

Model	LOC22-PRO	LOC24-PRO
Channels	2IN-2OUT	2IN-4OUT
Max Input Level (20kOhm)	40V / 400W @ 20K Ohm	40V / 400W @ 20K Ohm
Operating Voltage	9V-16V	9V - 16V
Trigger Selection	REM / DC/ AUDIO	REM / DC/ AUDIO
Turn On Trigger (DC)	3V- 7V	3V-7V
Output Max@13.8V	9.5V RMS	9.5V RMS
Input Impedance Selection (Speaker Level)	20/ 60 / 20k Ohm	20/ 60 / 20k Ohm
Input Impedance (RCA Level)	N/A	N/A
Ground Selection	GND / ISO/ 2000hm	GND 1 ISO/ 2000hm
Gain Adjustment	-28dB to +1dB	-28dB to +1dB
Input Sensitivity	0.5V-20V	0.5V- 20V
Signal to Noise	>110dB @6.4V Output	>110dB @6.4V Output
THD+N	<0.01%	<0.01%
Frequency Response	20Hz - 20kHz	20Hz - 20kHz
Low Pass Filter	< 250Hz (Rear Channels)	< 250Hz (Rear Channels)
Clip Indicator	YES	YES
Bss Boost	0dB + 12dB (Rear Channels)	0dB + 12dB (Rear Channels)



7TH BUILDING, NO.59 CHUANG FU ROAD, XIAO GANG  
INDUSTRIAL ZONE, NINGBO 315800, CHINA

Tel +86.574.873.88888

Fax +86.574.876.77777

[www.edgeholdings.com](http://www.edgeholdings.com)